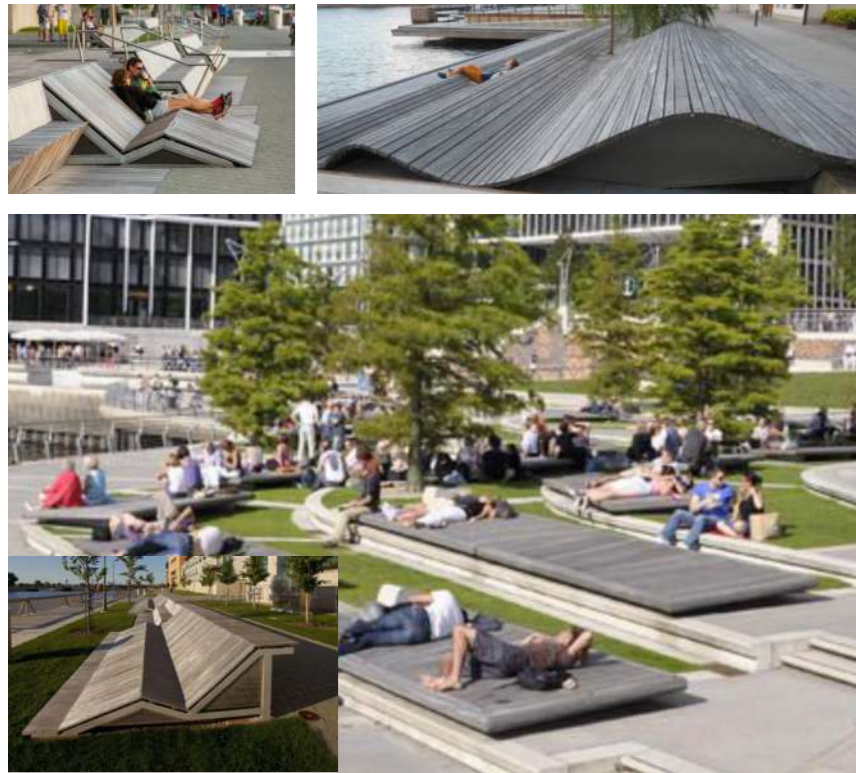


Galway Port LRD

Landscape Design Proposal

04.8 VIEWING TERRACE

The two-step viewing terrace with open views to Lough Atalia addresses the level change between Central Gathering Plaza and Lough Atalia Walk and functions as a dynamic and multi-functional gathering area set within public open space.



Reference Image Viewing terrace with sculptural benches to address level change

04.9 UNIVERSAL ACCESS TO CENTRAL GATHERING PLAZA

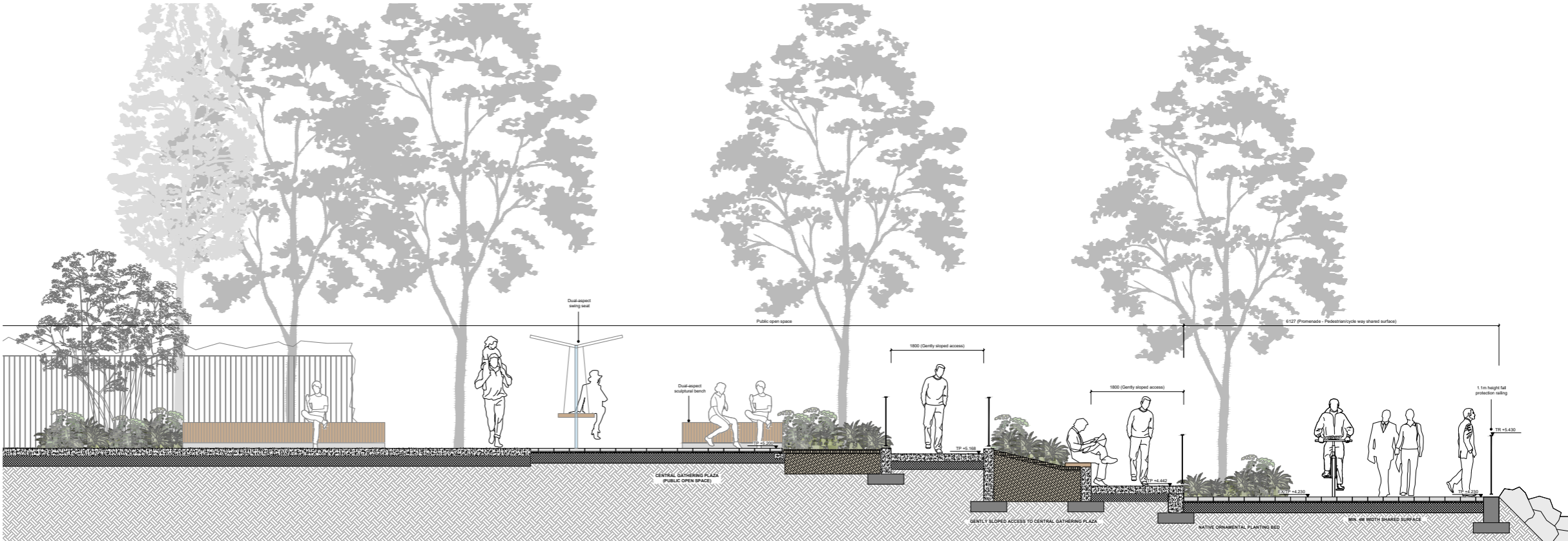
Part M compliant 1:21 gradient gently sloped access is provided along Lough Atalia Walk to address level change between Lough Atalia Walk and Central Gathering Plaza and allow universal access to the plaza. The gently sloped access is nested within ornamental planting bed to allow people to walk through landscape. Additionally, 2 sets of Part M compliant stepped access are provided at either end of the plaza as connection to Lough Atalia Walk.



Reference Image Swing seat



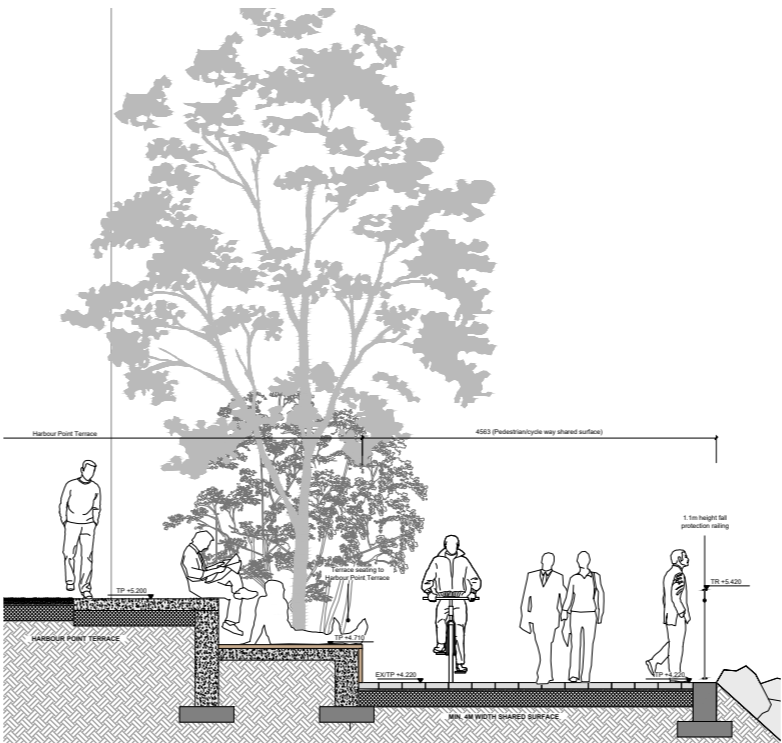
S-05 Section through Central Gathering Plaza



S-05.1 Section through Central Gathering Plaza, Gently Sloped Access and Lough Atalia Walk



- 10 HARBOUR POINT TERRACE
- 11 BLOCK A UPPER WALKWAY
- 12 LOWER PEDESTRIAN WALKWAY ALONG EASTERN BOUNDARY



S-06 Section through Harbour Point Terrace and Lough Atalia Walk

04.10 HARBOUR POINT TERRACE

Approx. 1.2m above ground terraced viewing platform to Block A southern elevation along southern approach to Lough Atalia Walk as a lookout point to Lough Atalia and Galway Bay.

04.11 BLOCK A UPPER WALKWAY

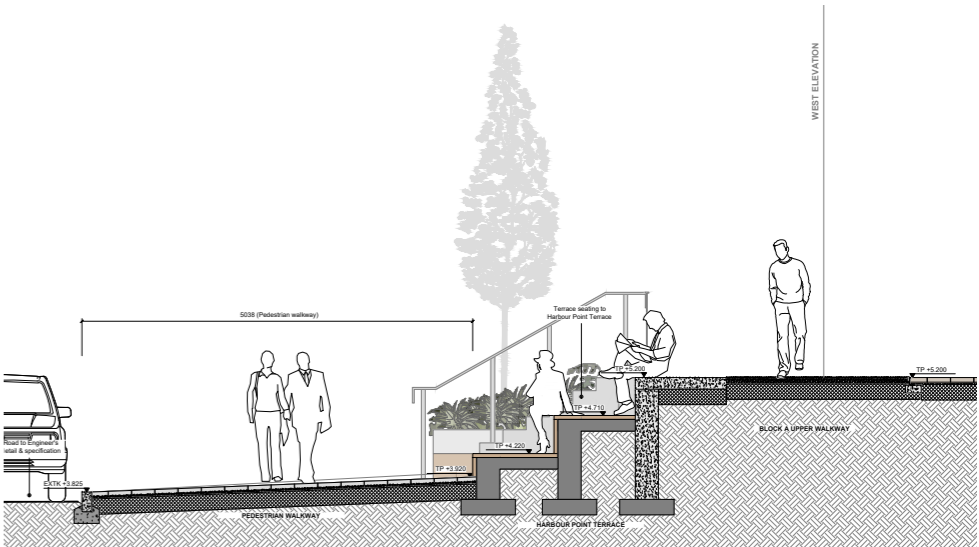
Upper walkway along Block A eastern elevation connecting Harbour Point Terrace to Upper Walkway Entrance Plaza along northeastern site boundary. Part M/Part K compliant fall protection railing is proposed along the full extent of upper walkway. 3 sets of Part M compliant stepped access to provide access from the Lower Pedestrian Footpath to the upper walkway.

04.12 LOWER PEDESTRIAN WALKWAY ALONG EASTERN BOUNDARY

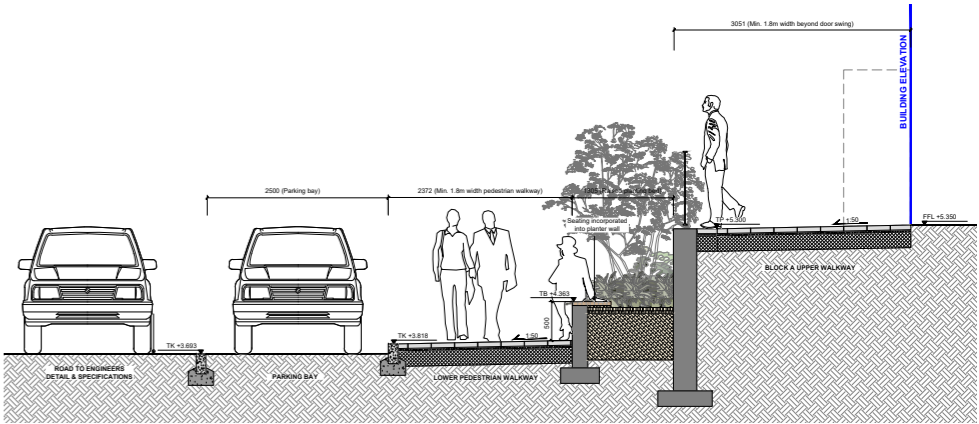
Min. 1.8m width pedestrian walkway along access road to provide access. Raised planting beds with native ornamental shrubs and perennial planting, native columnar trees and multi-stemmed trees to screen the retaining wall of the Upper Walkway. Benches strategically allocated along the raised planter to allow sitting/resting opportunities on approach to Lough Atalia Walk.



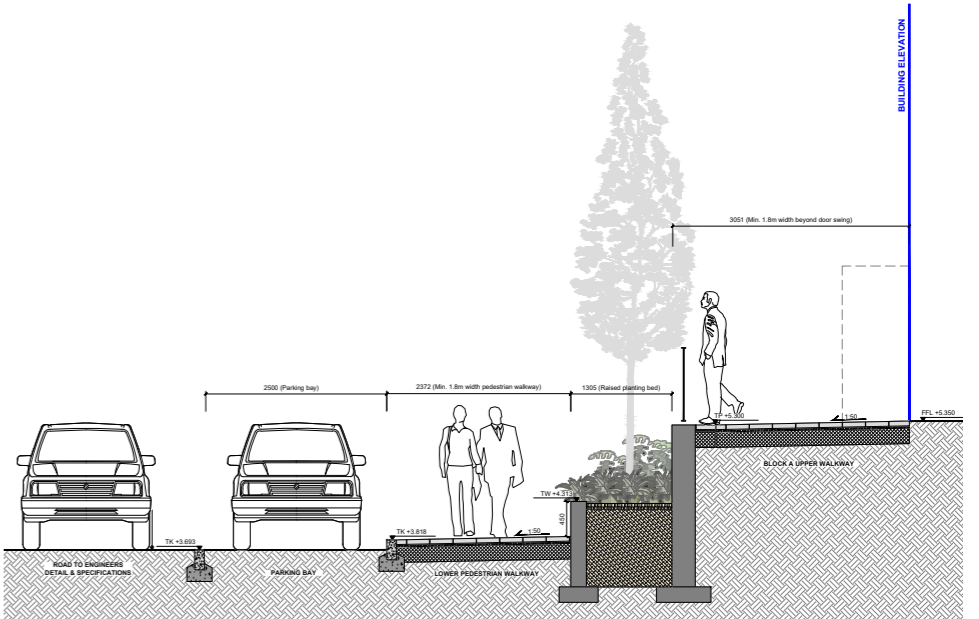
Reference Image Seating incorporated with raised planter wall to soften visual impact of the retaining wall



S-07 Section through Lower Pedestrian Walkway, Harbour Point Terrace and Block A Upper Walkway

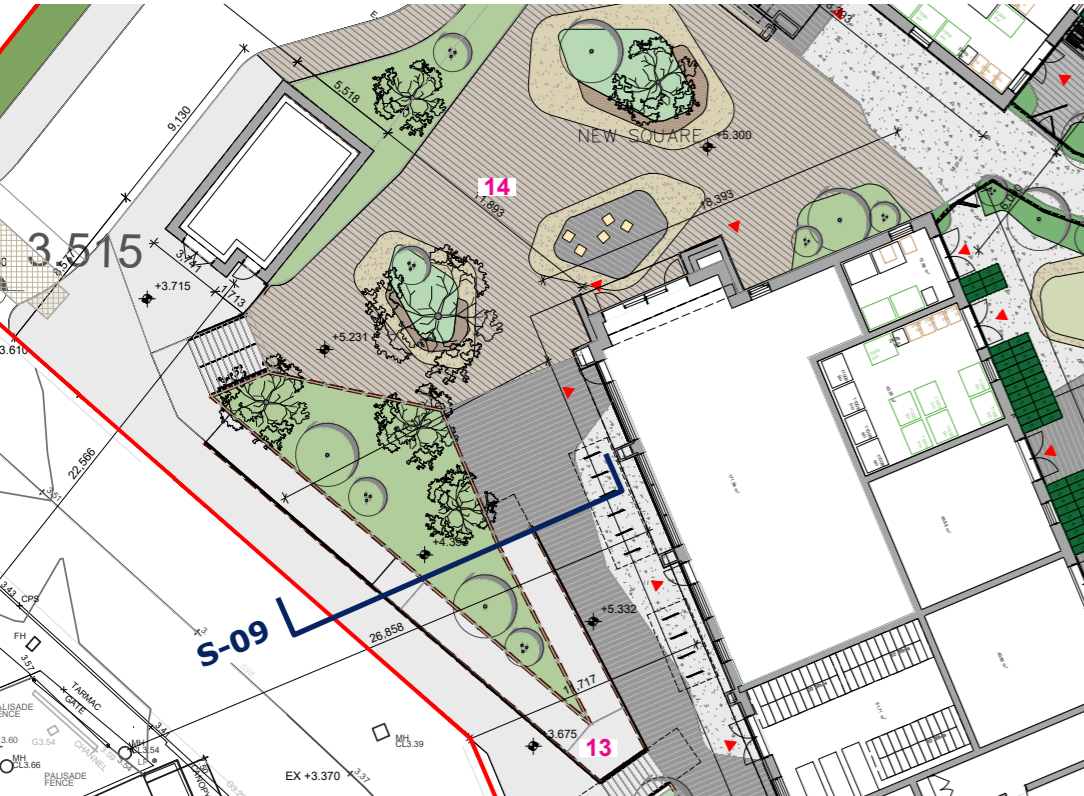


S-08 Section through Lower Pedestrian Walkway and Block A Upper Walkway



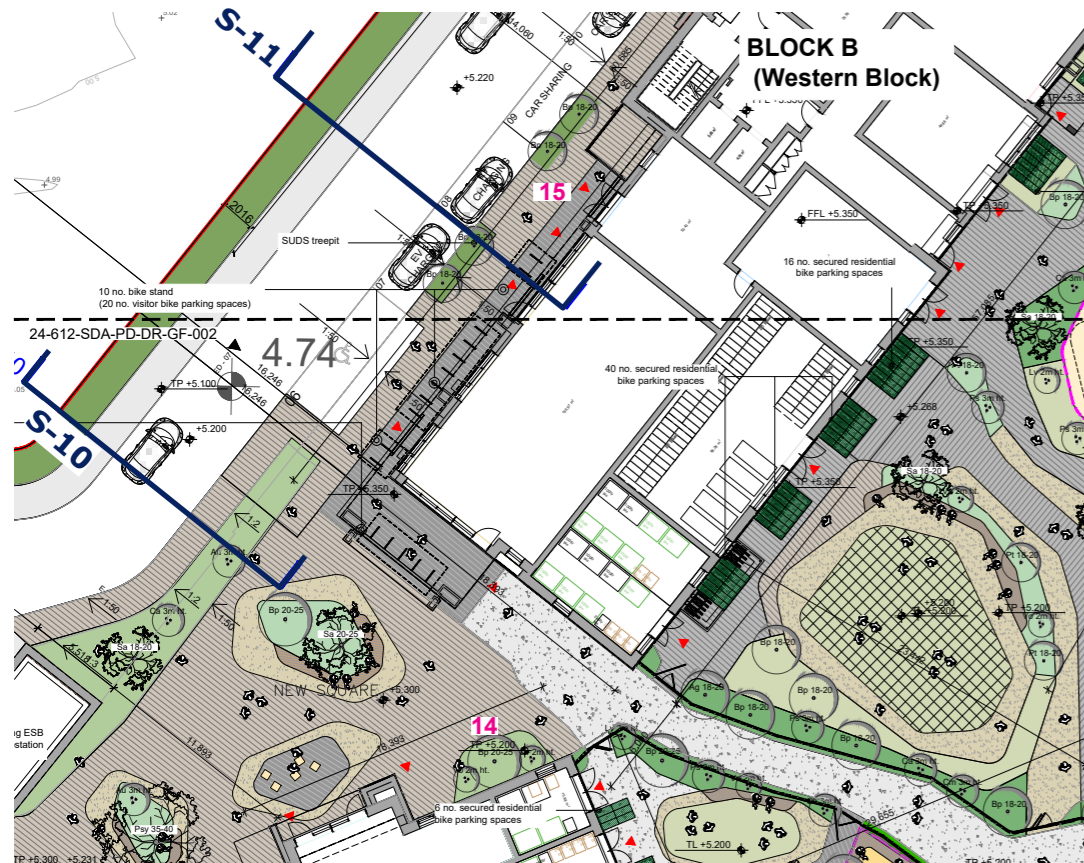
S-08.1 Section through Lower Pedestrian Walkway and Block A Upper Walkway

Galway Port LRD



04.13 GENTLY SLOPED AND STEPPED ACCESS TO BLOCK A UPPER WALKWAY

Part M compliant 1:21 gradient gently sloped access along eastern site boundary to connect the Lower Pedestrian Walkway to the Upper Walkway and Entrance Plaza.



04.14 BLOCK A ENTRANCE PLAZA

Entrance Plaza with south-oriented sculptural seat bench nested in flowering shrub and perennial planting bed.

13 GENTLY SLOPED AND STEPPED ACCESS TO BLOCK A UPPER WALKWAY

14 ENTRANCE PLAZA

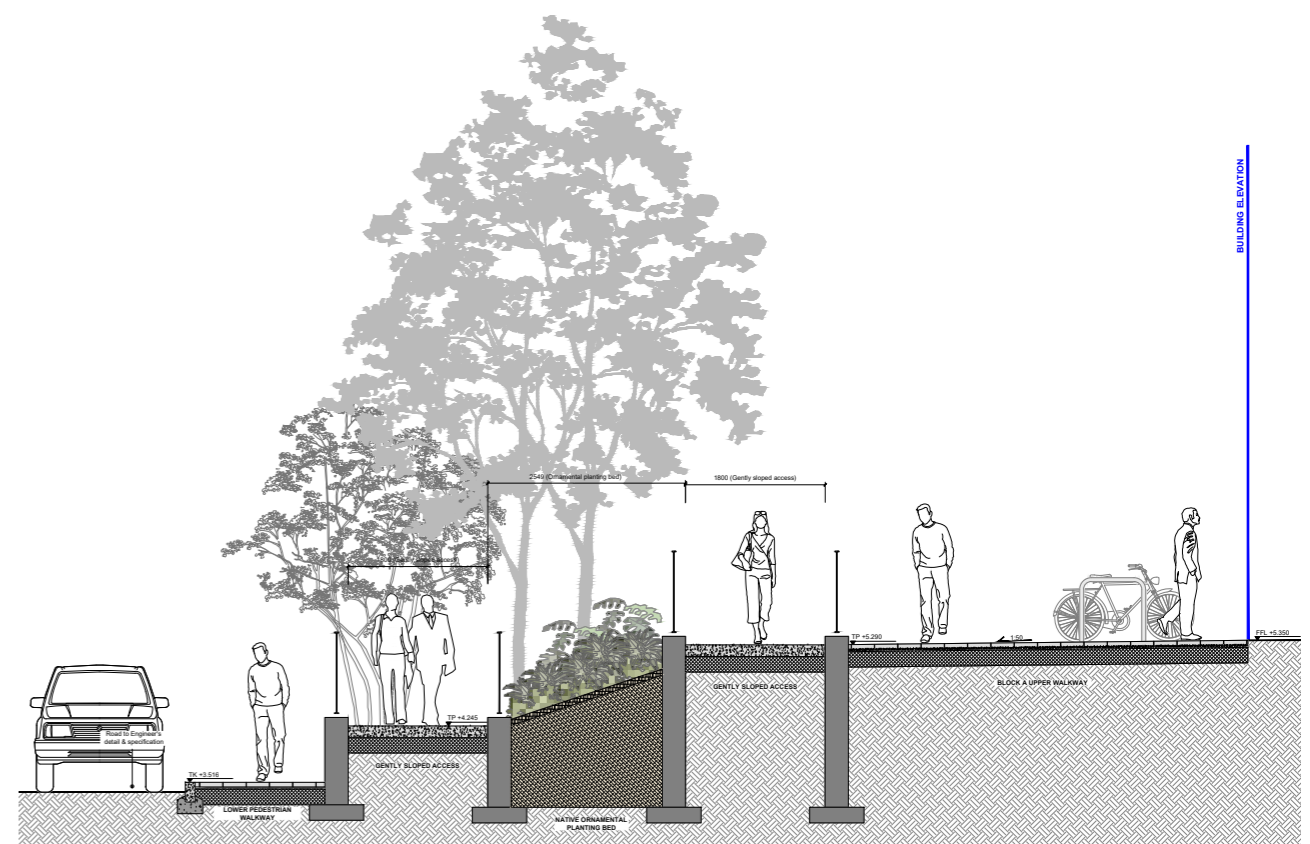
15 PEDESTRIAN WALKWAY TO BLOCK B

04.15 PEDESTRIAN WALKWAY TO BLOCK B

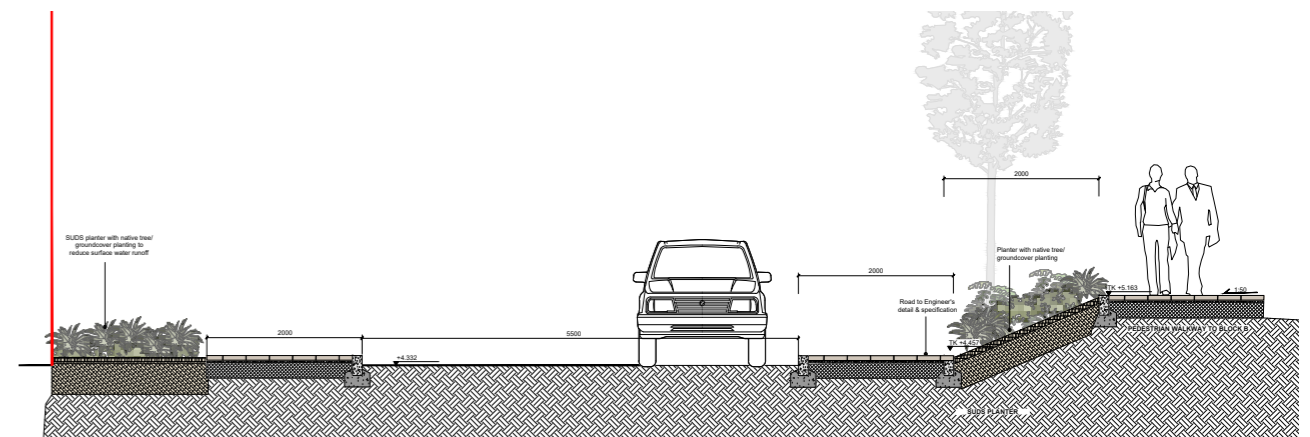
Pedestrian walkway along Block B northwestern elevation adjacent to parking bays. SUDS tree pits are proposed along the walkway to reduce surface water runoff.



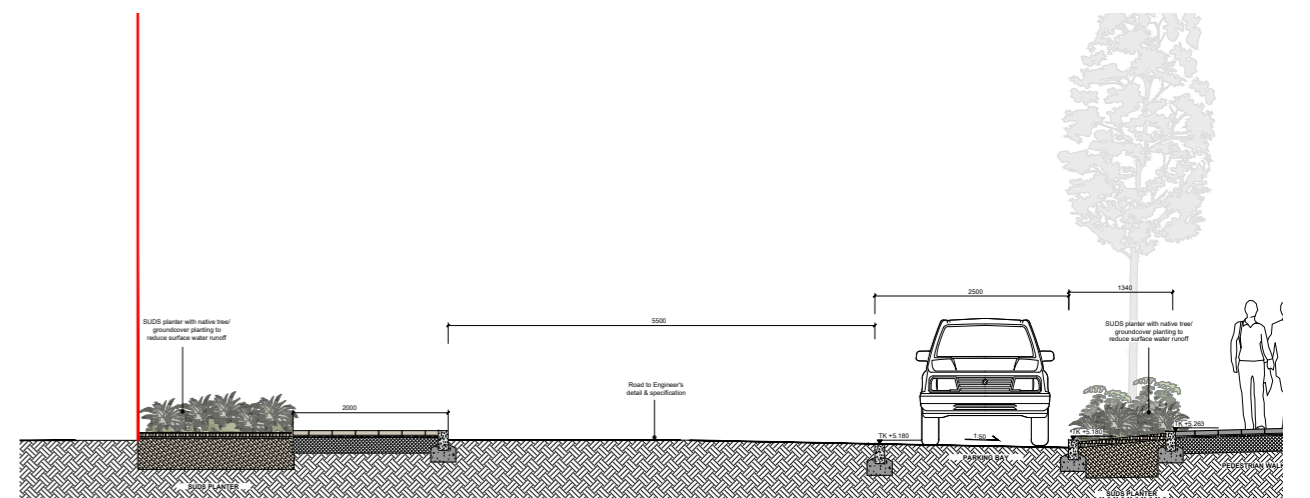
Reference Image SUDS Tree pit



S-09 Section through Lower Pedestrian Walkway, Gently Sloped Access and Block A Entrance Plaza



S-10 Section through Pedestrian Walkway to Block B



S-11 Section through Pedestrian Walkway to Block B

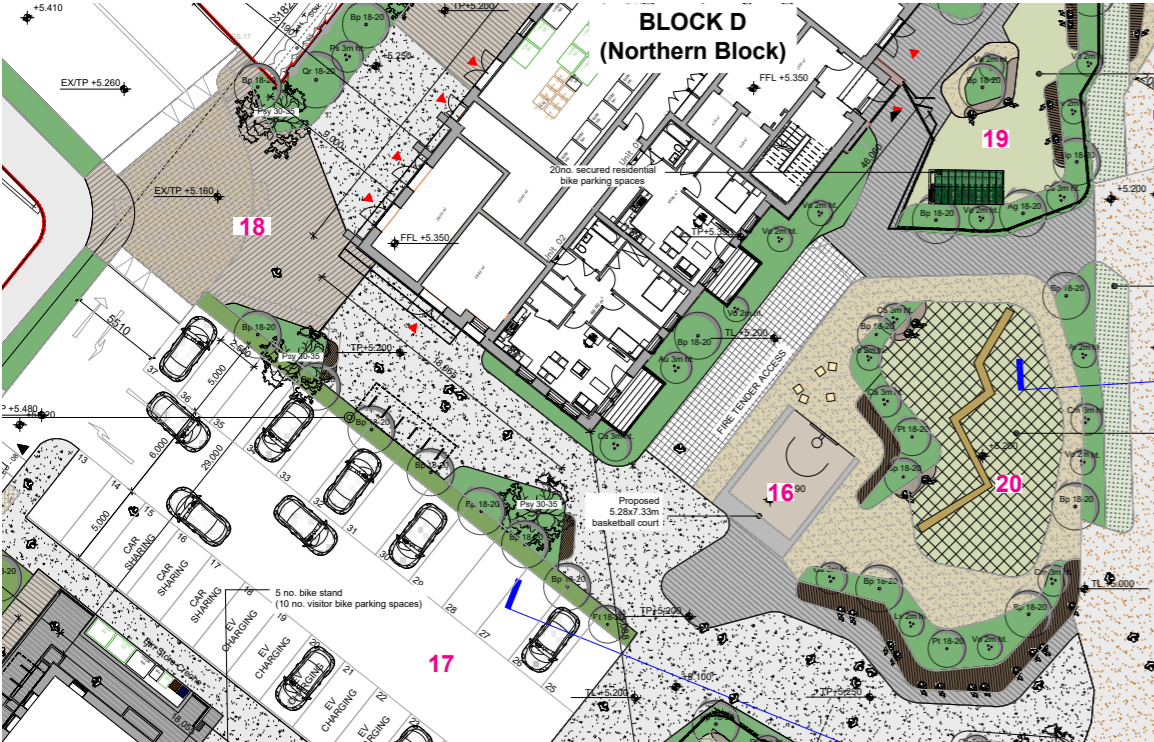
Galway Port LRD

04.16 TEENAGE PLAY AREA AND GATHERING HUB

The proposed 5.28x7.33m basketball court located east to Block D provides opportunities for teenage players to engage in 1-on-1 basketball or other sports activities. Flexible wooden cube seating are also provided around the Gathering Hub.



Reference Image 1-on-1 basketball court east to Block D with flexible wooden cube seating



- 16 TEENAGE PLAY AREA AND GATHERING HUB
- 17 CAR PARK
- 18 BLOCK D ENTRANCE PLAZA
- 19 COMMUNAL GARDEN D1



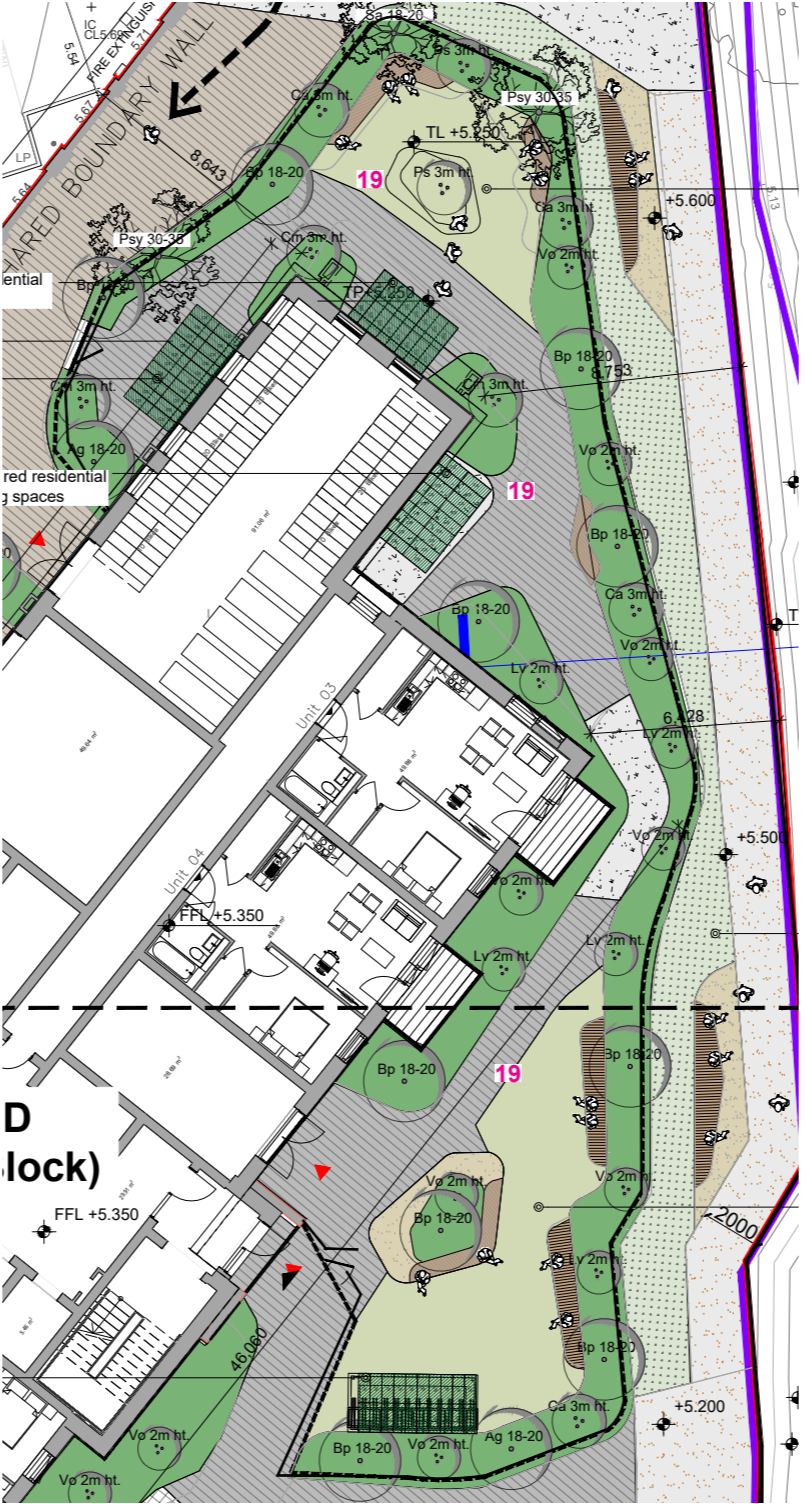
Reference Image Seating areas defined by low maintenance planting. Specimen trees frame views and soften elevations.

04.17 CAR PARK

Car parking area south-west to Block D.

04.18 BLOCK D ENTRANCE PLAZA

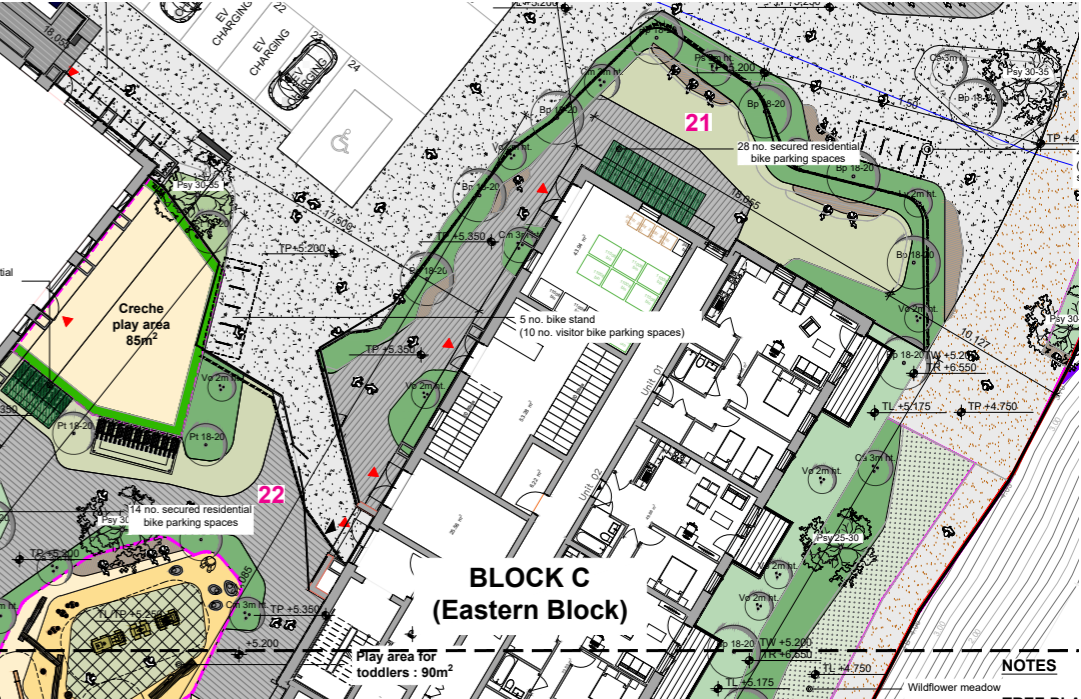
The entrance plaza features flowering shrubs and ornamental planting beds with feature clear-stemmed and multi-stemmed trees. The soft landscape is designed to screen views from car park and enhance visual amenity of the plaza.



04.19 COMMUNAL GARDEN D (BLOCK D NORTHEASTERN ELEVATION)

An approx 470m² secured communal garden with south-oriented open views is designated along Block D northern and eastern elevation with buffer planting and long sculptural benches to provide high quality gathering space for residents.

Landscape Design Proposal



04.21 SECURED COMMUNAL GARDEN C1 (BLOCK C NORTHEASTERN ELEVATION)

The approx. 270m² secured communal garden features long sculptural seat bench and a hard-paved plaza to allow resting/gathering opportunities.



Reference Image Communal open space defined by ornamental planting beds, specimen trees and gathering areas with seating.



Reference Image Perennial buffer planting punctuated by specimen trees as separation of accessible open space areas from residential.



Reference Image Nectar garden with seating areas set within drought tolerant nectar and pollen rich flowering perennials. South-oriented long scukptural seat benches with views to Lough Atalia and Galway Bay.



- 22 COMMUNAL GARDEN WITHIN COMMUNAL OPEN SPACE (BLOCK B & C)
- 23 OPEN LAWN WITHIN COMMUNAL OPEN SPACE (BLOCK B & C)
- 24 CRECHE PLAY AREA
- 25 COMMUNAL OPEN SPACE (BLOCK A)
- 26 NATURE-BASED PLAY AREA (FOR TODDLERS/OLDER CHILDREN)
- 27 NATURE-BASED PLAY AREA (FOR OLDER CHILDREN)

04.22 COMMUNAL GARDEN WITHIN COMMUNAL OPEN SPACE (BLOCK B & C)

The communal garden situated along southern elevation of Block C is designed within the approx. 1053m² secured communal open space between Block B & C provides high quality gathering space for residents. It includes a gathering plaza with south-oriented sculptural seating and a large area of open lawn. The communal garden is secured and separated from Central Gathering Plaza within public open space by fence and a tall native flowering buffer planting.

04.23 OPEN LAWN WITHIN COMMUNAL OPEN SPACE (BLOCK B & C)

A large area of multi-purpose open sun lawn is provided outside of Block B.

04.24 CRECHE PLAY AREA

An approx. 85m² play area is designated as play area outside of the creche in Block B, secured with fence and native hedgerow to provide privacy.

04.25 COMMUNAL OPEN SPACE (BLOCK A)

The approx. 388m² secured communal open space along Block A eastern elevation provides high quality play and gathering space for residents. It features an approx. 200m² nature-based play area for older children and an open sun lawn and communal garden with long bench seating nested within tall flowering shrubs and perennial planting beds. The communal open space is secured, fenced or planted with native hedgerow screening to increase privacy and security.



Reference Image Communal open space defined by open lawns, shrubs, specimen trees and gathering areas with seating.

04.26 NATURE-BASED PLAY AREA (FOR TODDLERS/OLDER CHILDREN)

2 no. nature-based play areas are provided across the communal open space within the development. An approx. 200m² play area for older children is provided within Block A communal pen space. An approx. 85m² play area for toddlers is provided within Block B & C communal pen space.

The landscape proposal provides a total of 285m² nature-based play area, of which 200m² is designated as play area for older children and 85m² for toddlers.

Landscape scheme proposals have been developed to move beyond the traditional concept of play provision through the selection of standard 'of the shelf' equipment to a Nature-based Play Opportunities approach.

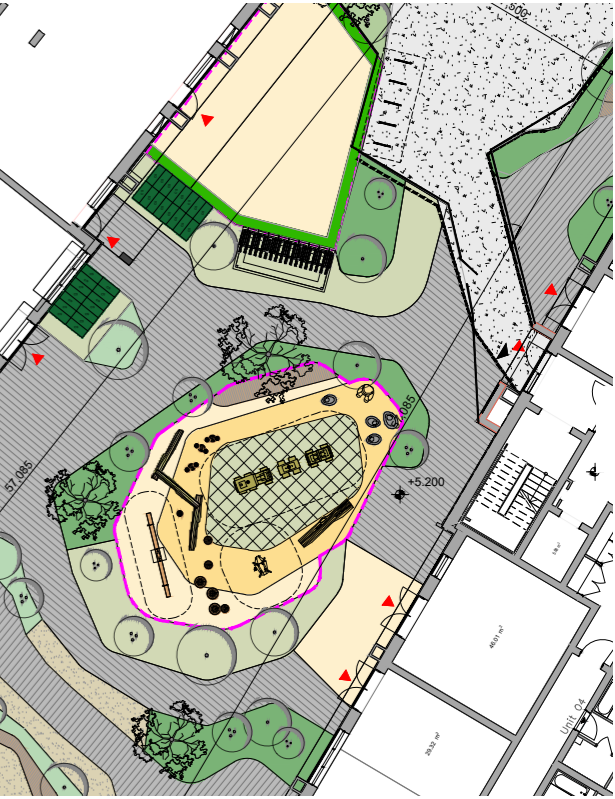
A play strategy has been developed based on the guiding principle of sustainability, re-use, connection to nature and the utilisation of found or locally sourced materials for play. Our aim is to fabricate the majority of play items and seating from locally sourced trees along with some high quality off the shelf equipment.

Play spaces enhance the parks and open spaces in which they are situated to the benefit of the whole community. The incorporation of natural elements within play spaces renders them pleasant spaces for children and their parents/carers to spend time in.

Spontaneous outdoor play is encouraged throughout this residential development. Richter Spielgeräte play equipment is versatile allowing all age groups to enjoy them. Richter play equipment promotes nature play and encourages exploration of the landscape in an adventurous but safe manner. Richter Spielgeräte play elements are made from mountain larch (Larix decidua) from the Alps, grown at a height of 1000 to 1800 m above sea level and originating from sustainable cultivation therefore they are hard-wearing and require little maintenance.



Nature-based play area for **older children** (within Communal Open Space Block A)



Nature-based play area for **toddlers** (within Communal Open Space Block B&C)



Cradle Nest by Richter Spielgeräte



Twin Swing by Richter Spielgeräte



Climbing tree frame



Wobbly Wild Boar



Beam See Saw by Richter Spielgeräte



Lily pad stepping-stones



RIKO Railway by Richter Spielgeräte



Jumping Disc



Stroking Stone Bear



Boulder stepping stone



Stainless Steel Slide



Tree trunk totem

05 SPATIAL ALLOCATION, FACILITIES AND UTILITIES

05.1 PUBLIC AND COMMUNAL OPEN SPACE

Public and communal open space are configured to meet required areas while maximising functionality of space. The interplay between public and communal open space creates a dynamic landscape throughout the site. Public/communal open space count are as follows:

Public Open Space (POS): 3,802m²
Public Open Space (POS) requirement: 2,431m²

Communal Open Space (COS): 2,181m²
Communal Open Space (COS) requirement: 2,144m²

Public open space is configured to meet requirement while maximising functionality of space. Public open space comprises:

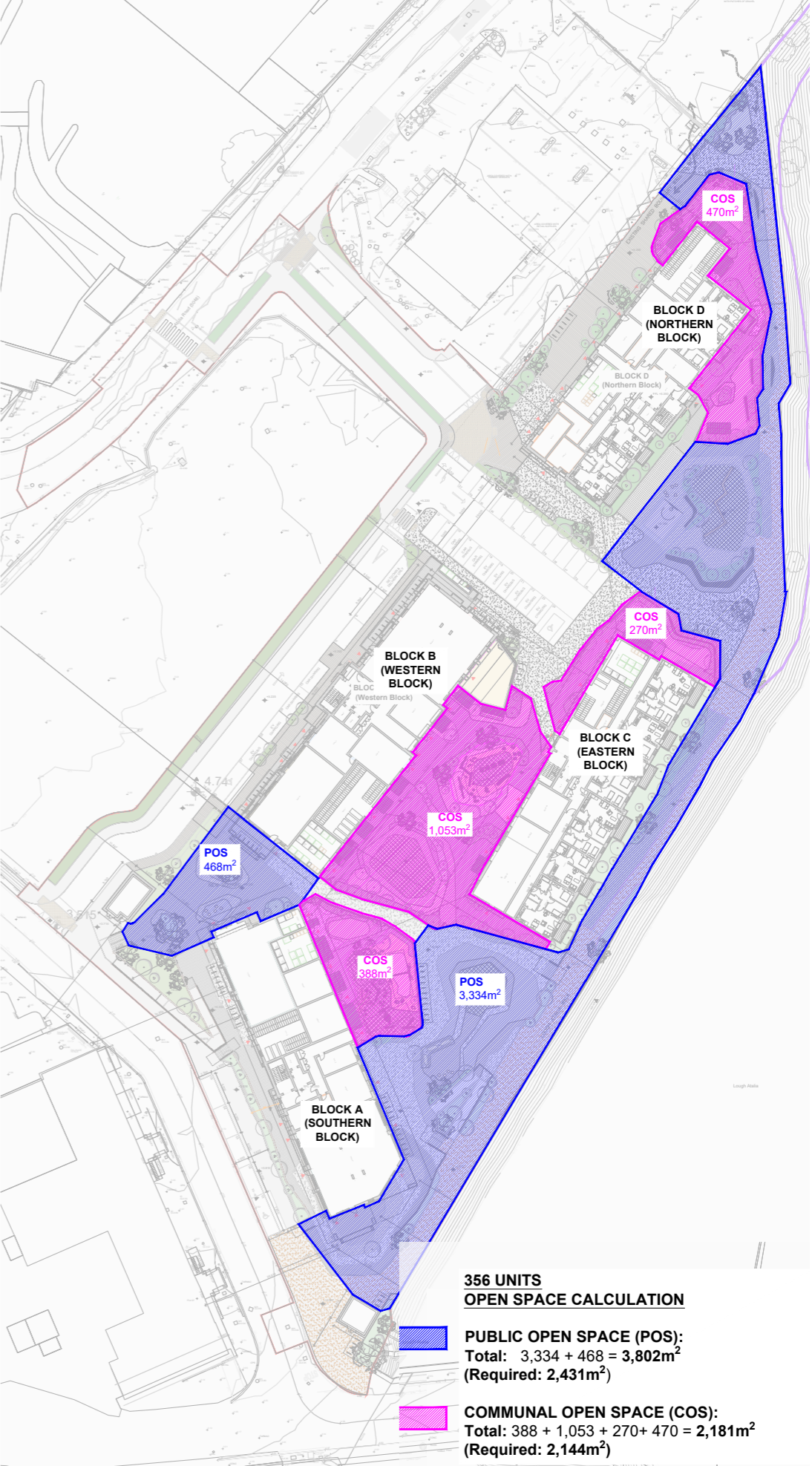
- Lough Atalia Walk east to Urban Square, Block C and Central Gathering Plaza
- Urban Square between Block C & D
- Central Gathering Plaza and Viewing Terrace between Block A & C
- Harbour Point Terrace south to Block A

Total public open space is 3,802m², which is 56% greater than the requirement of 2,431m².

Communal open space within the apartment blocks is designed to provide quality open space for residents. Communal open space comprises:

- Communal Garden D (Block D northeastern elevation)
- Communal Garden C1 (Block C northwestern elevation)
- Communal Open Space within Block B & C
- Communal Open Space within Block A
- Nature-based Play Areas

Total communal open space is 2,181m², which is 1.7% greater than the requirement of 2,144m².



05.2 BIKE PARKING

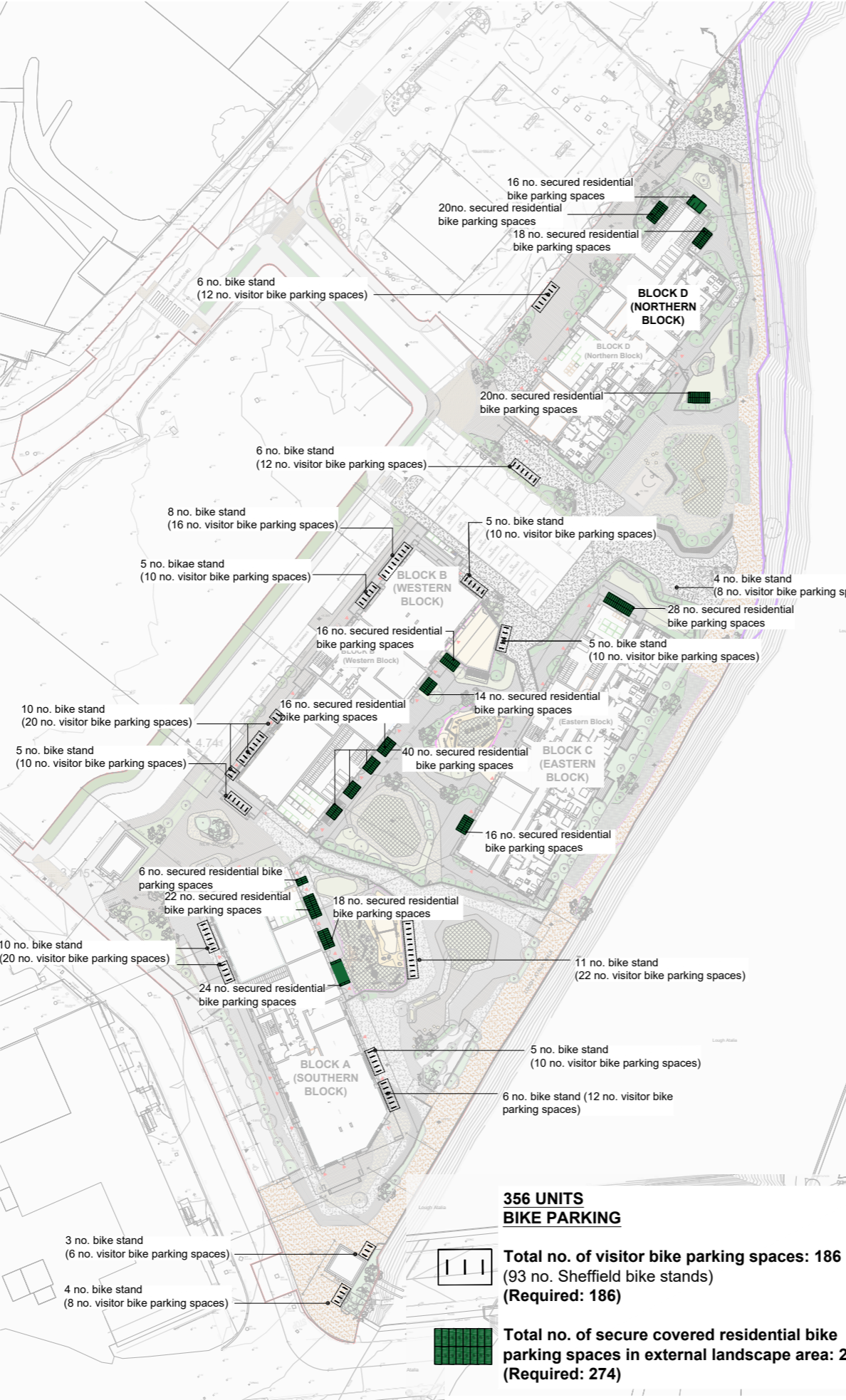
05.2.1 VISITOR BIKE PARKING

186 no. visitor bike parking spaces (93 no. Sheffield bike stands) are accommodated throughout the site. A substantial number of visitor bike parking spaces are located along western/northwestern elevation of Block B with close proximity to entrance areas along the new internal street. A number of visitor bike parking spaces are provided along Block A upper walkway and across Central Gathering Plaza to facilitate cyclists arriving from Lough Atalia Walk.



05.2.2 VISITOR BIKE PARKING

A total of 555 no. secured covered residential bike parking spaces are provided within the site, of which 274 no. are provided externally within the communal open space. 70 no. are provided along eastern elevation of Block A; 102 no. are provided along across Communal Open Space Block B & C. 28 no. are provided within Communal Garden C1. 74 no. are provided across Communal Garden D. Green roof is proposed to all covered bike parking to soften the visual impact of the building development and enhance biodiversity. Alternative option can be considered with resident cycle parking located within public open space - covered, lockable, and secured with green roof.



06 HARD LANDSCAPE MATERIALS

06.1 PAVING

Paving materials within the development have been specified with the intent of providing high-quality surface materials which will survive well over the long term and require little maintenance. This follows the Public Realm Strategy of making Galway an exemplar of sustainability, with locally sourced materials where available and sustainable urban drainage systems wherever possible. All paving materials will comply with slip resistance criteria and have been specified as level, with no change in gradient across paving which might cause a slip, trip or fall. Main pathways are specified as a minimum of 1.8m in width to allow wheelchairs or prams to pass each other. Paving is suitably accessible by all abilities in accordance with Technical Guidance Document Part M – Access and Use Building Regulations (2022).



- 1 EXPOSED AGGREGATE CONCRETE PAVING
- 2 HIGH QUALITY NATURAL STONE PAVING
- 3 GOLDEN RESIN BOUND GRAVEL PAVING
- 4 WETPOUR ABSORBING IN-SITU SYNTHETIC SURFACING TO PLAY AREA
- 5 RUBBER SAFETY MATTING GRASS REINFORCEMENT (SAFAGRASS)
- 6 RESIN-BONDED GRAVEL AS LONG TERM MATERIAL TO LOUGH ATALIA WALK