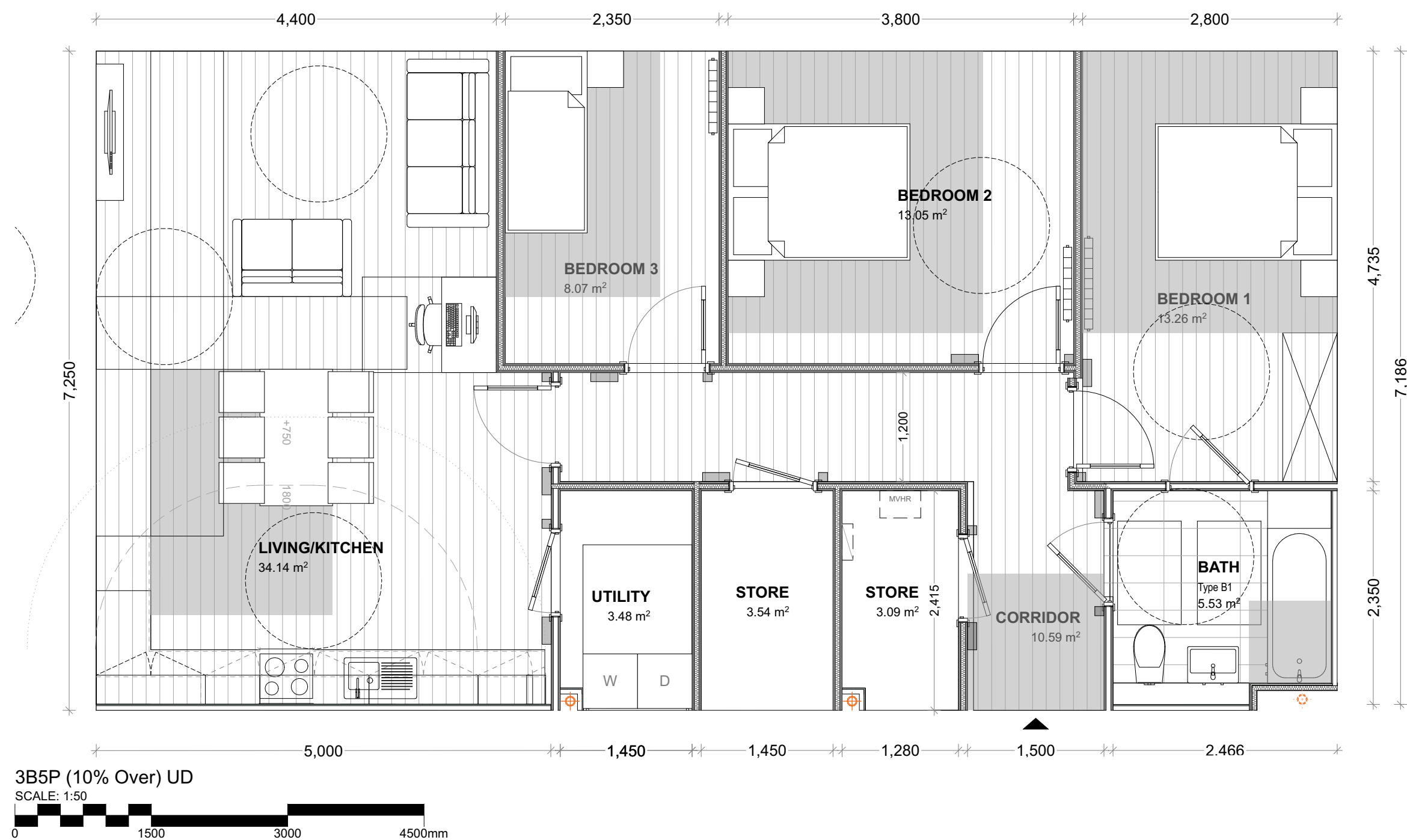




UNIVERSAL DESIGN	
UNIT TYPE 2B	
1 BED 2 PERSON	
BEDROOM	13.49 m ²
COMBINED KITCHEN/ LIVING AREA	25.65 m ²
AGGREGATE STORAGE	3.21 m ²
WC	5.43 m ²
TOTAL APARTMENT AREA	49.88 m ²



UNIVERSAL DESIGN	
UNIT TYPE 3B	
2 BED 3 PERSON	
BEDROOM 01	13.26 m ²
BEDROOM 02	8.00 m ²
AGGREGATE BEDROOM	21.26 m ²
COMBINED KITCHEN/ LIVING AREA	28.00 m ²
AGGREGATE STORAGE	5.35 m ²
WC	5.53 m ²
TOTAL APARTMENT AREA	69.60 m ²



UNIVERSAL DESIGN	
UNIT TYPE 5B	
3 BED 5 PERSON	
BEDROOM 01	13.26 m ²
BEDROOM 02	13.05 m ²
BEDROOM 03	8.07 m ²
AGGREGATE BEDROOM	34.38 m ²
COMBINED KITCHEN/ LIVING AREA	34.14 m ²
AGGREGATE STORAGE	10.11 m ²
WC 01	5.53 m ²
TOTAL APARTMENT AREA	99.63 m ²

1. This drawing is the property of Altu Architects Ltd. It must not be copied or given to a third party without the permission of Altu Architects Ltd.
2. Work to figured dimensions only. Do not scale the drawing.
3. The contractor is responsible for checking all dimensions and levels on site and shall refer all discrepancies to the Project Architect.
4. Drawings to be read in conjunction with all relevant engineers drawings, Mechanical and electrical, any structural or services information shown on this drawing is indicative only.
5. The contractor shall be responsible for the coordination of all structure, services and finishes.
6. Proprietary items shall be fixed in strict accordance with manufacturers instructions.
7. This drawing shall only be used for the work stage as denoted and no subsequent stage.

-	01.09.25	Issue for LRD Planning Submission	DE	PT
Rev	Date	Description	Issued By	Checked By