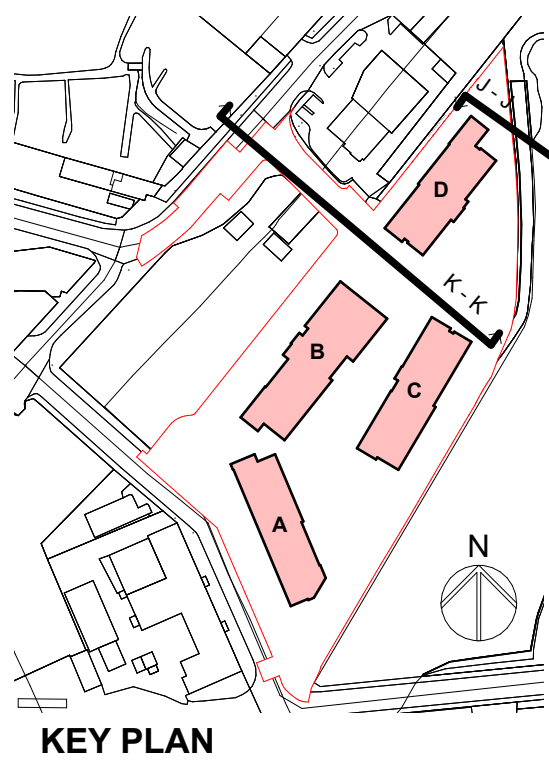
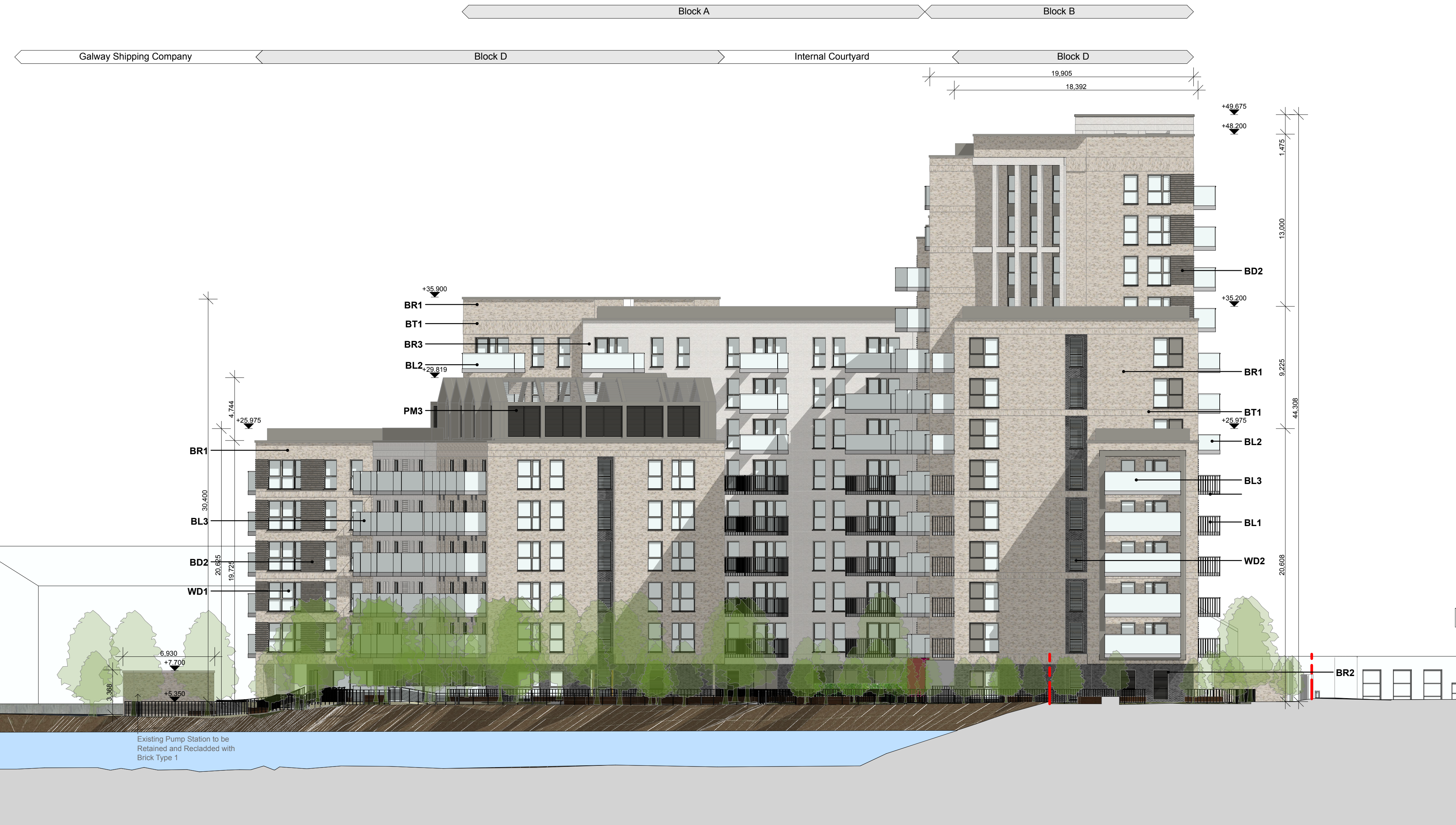


1. This drawing is the property of Altu Architects Ltd. It must not be copied or given to a third party without the permission of Altu Architects Ltd.  
2. Work to figured dimensions only. Do not scale the drawing.  
3. The contractor is responsible for checking all dimensions and levels on site and shall enter all discrepancies to the Project Architect.  
4. Drawings to be read in conjunction with all relevant engineers drawings, mechanical and electrical, any structural or services information shown on this drawing is indicative only.  
5. The contractor shall be responsible for the coordination of all structure, services and finishes.  
6. Proprietary items shall be based in strict accordance with manufacturers' instructions.  
7. This drawing shall only be used for the work stage as identified and no subsequent stage.



J-J Internal Courtyard Section Elevation - Block B  
SCALE:1:200



H-H North Elevation - Block D  
SCALE:1:200

#### KEY - Materiality

- BR1** Brick Type 1  
Buff Brick with off-white mortar
- BR2** Brick Type 2  
Dark Grey with off-white mortar
- BR3** Brick Type 3  
Light Grey Brick with off-white mortar
- BT1** Banding Type 1  
Stack Bond Buff Brick with off-white mortar
- BT2** Banding Type 2  
Stack Bond Dark Grey Brick with off-white mortar
- BT3** Banding Type 3  
Stack Bond Light Grey Brick with off-white mortar
- BT4** Banding Type 4  
Stone Bond - Light Cream Colour
- BD1** Brick Detail 1  
Promoting Brickwork - Button Brick colour to match
- BD2** Brick Detail 2  
Promoting Brickwork - Horizontal Brick colour to match
- BL1** Balcony Type 1 - 1200mm High  
Metal Railing and Top Rail to selected RAL colour
- BL2** Balcony Type 2 - 1200mm High  
Glazing Balcony with Metal Top Rail to selected RAL colour
- BL3** Balcony Type 3 - 1500mm High  
Glazing Balcony with Metal Top Rail to selected RAL colour
- WD1** Double Glazed Windows with  
Square Profile Frame to selected RAL colour
- WD2** Loured ACV with Square Profile  
Frame to selected RAL colour
- PM1** Pressed Metal Box Frame to  
selected RAL Colour
- PM2** Perforated Metal Panelling to  
selected RAL colour
- PM3** Pressed Metal Loures Screen to  
selected RAL colour
- PM4** Pressed Metal Capping to select  
RAL colour

Rev	Date	Description	Issued By	Checked By
01/10/23		Block D LRD Planning Submission	AS	PT

**ALTU** Architects  
40/50 Camero Street Level  
Dubai, UAE  
T: +971 (0) 1 234 6666  
E: info@altuarchitects.ae  
W: altuarchitects.ae

#### LRD PLANNING

Client:  
The Land Development Agency

Project:  
Galway Port LRD

Drawn:  
Site Elevations Sections 5 of 5

Job No: 24064  
Scale: 1:1, 1:200, 1:5.71

Status: ☒ Approved  
Revised: ☐ Rejected

Altitude: +P106.5