

1.

This drawing is the property of Altu Architects Ltd. It must not be copied or given to a third party without the permission of Altu Architects Ltd.
2.

Work to figured dimensions only. Do not scale the drawing.
3.

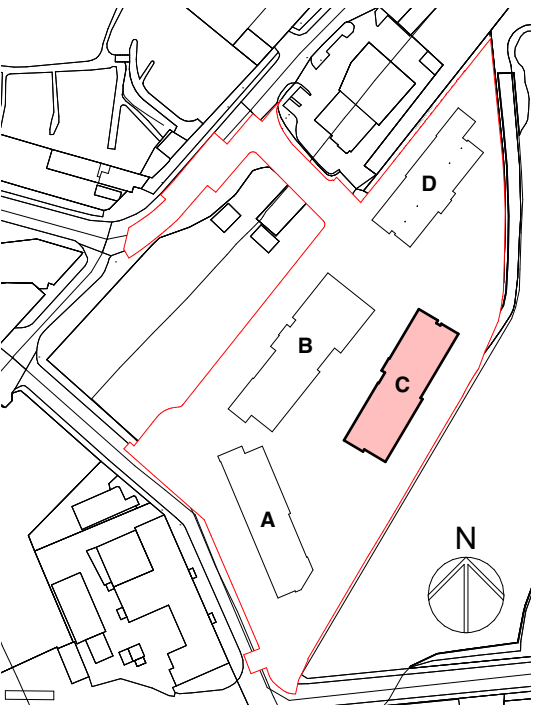
The contractor is responsible for checking all dimensions and levels on site and shall refer all discrepancies to the Project Architect.
4.

Drawings to be read in conjunction with all relevant engineers drawings. Mechanical and electrical, any structural or services information shown on this drawing is indicative only.
5.

The contractor shall be responsible for the coordination of all structure, services and finishes.
6.

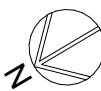
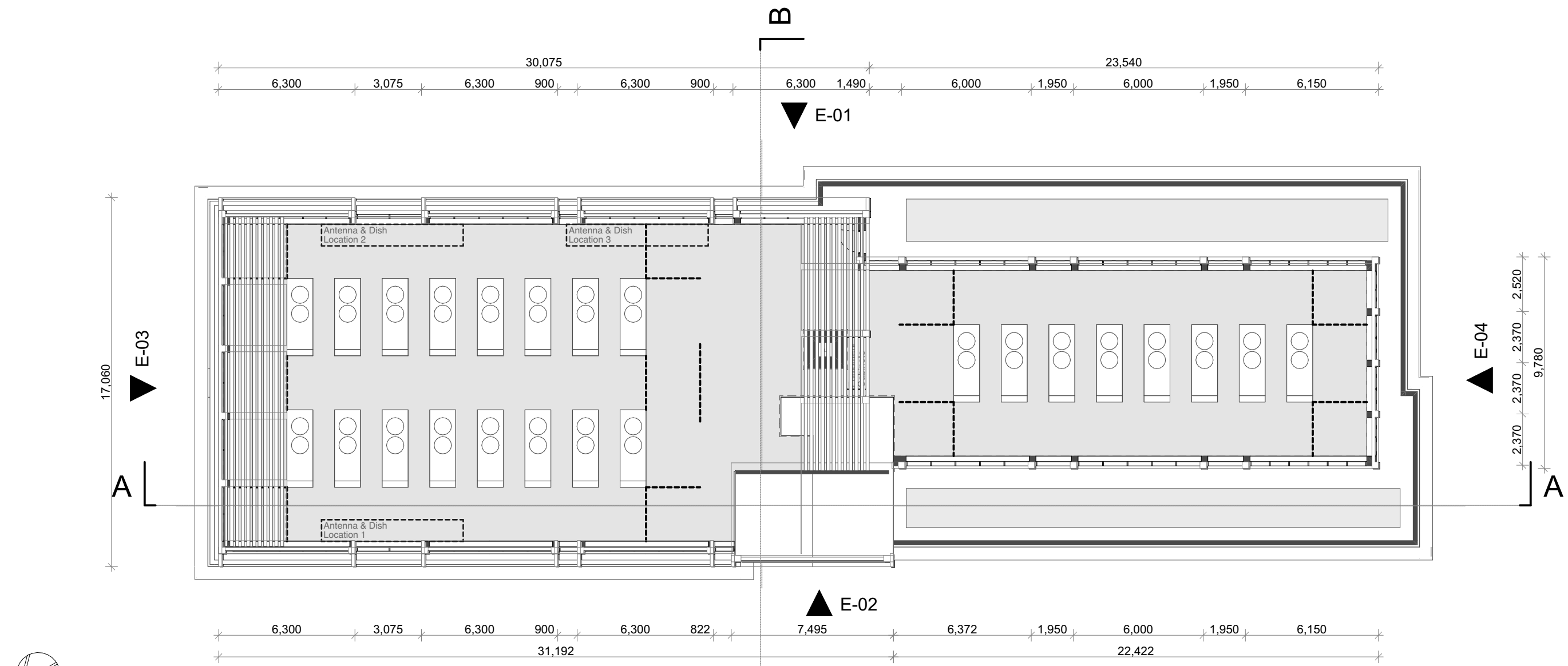
Proprietary items shall be fixed in strict accordance with manufacturers instructions.
7.

This drawing shall only be used for the work stage as denoted and no subsequent stage.

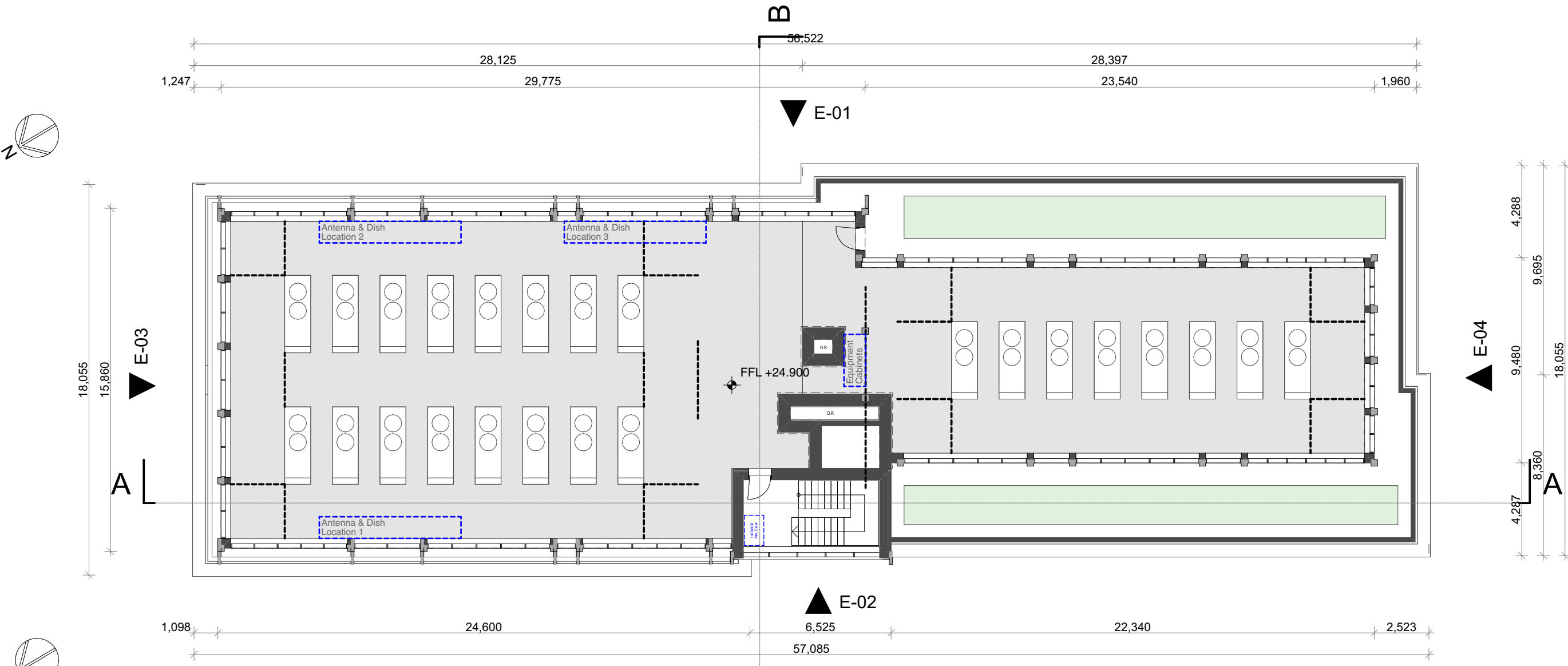


KEY PLAN

NOTE:
Refer ALTU Architects' Drawings
P107.1 Standard Apartment Typology
P107.2 Universal Design Apartment Typology
For Apartment Details



Overall Roof
SCALE:1:200



Roof
SCALE:1:200

Rev	Date	Description	Issued By	Checked By
-	01.09.25	Issue for LRD Planning Submission	DE	PT

ALTU

ALTI Architects
14/15 Camden Street Lower
Dublin 2
T: +353 (0) 1 254 6996
E: info@altuarchitects.ie
W: altuarchitects.ie

LRD PLANNING

Client:
The Land Development Agency

Project:
Galway Port LRD

Drawing:
Block C - Plans 2 of 2

Job No
24064

Scale # A1
As Indicated

Status

Revision

Author

Designer

Checker

Drawn

Rev

Revised

By

Notes

- - - - - P104.2